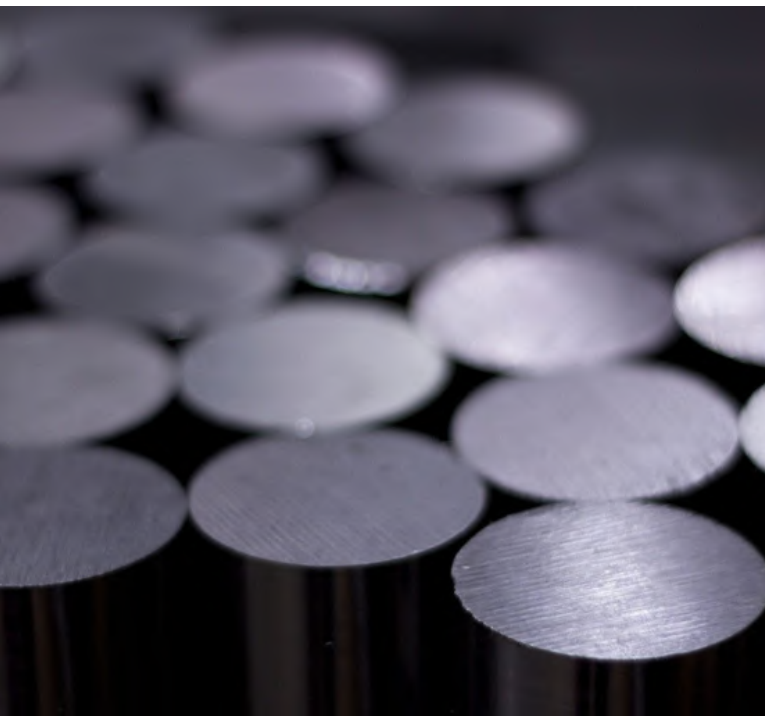




METAL VISION



" OUR METAL FOR
YOUR SOLUTION"



ABOUT US

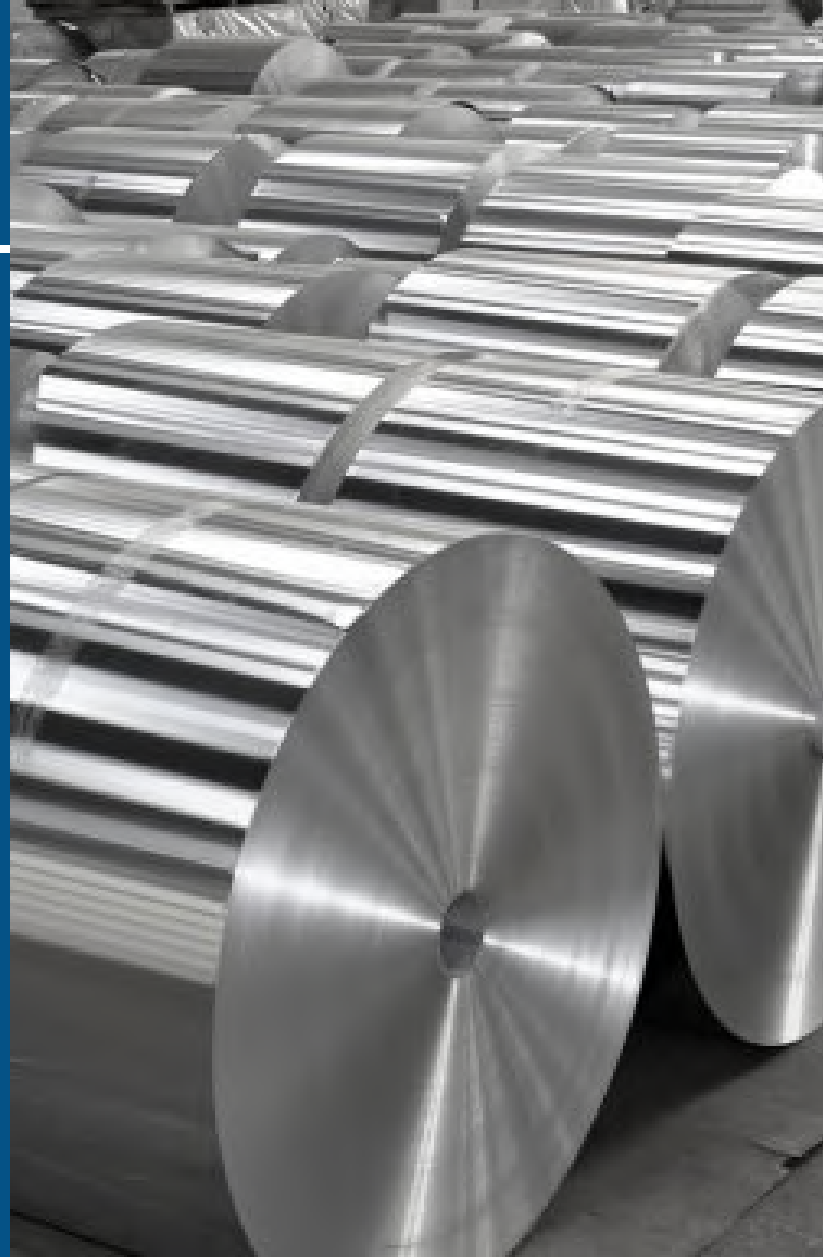
"Metal Vision" is one of the Fastest growing company in Iron and steel Industries with the Experience of AIMC group Since 1967 dealing in Ferrous and non ferrous metals

"OUR METAL FOR YOUR SOLUTION"



PRODUCTS

"OUR METAL FOR YOUR SOLUTION"



COILS

PIPES & TUBES

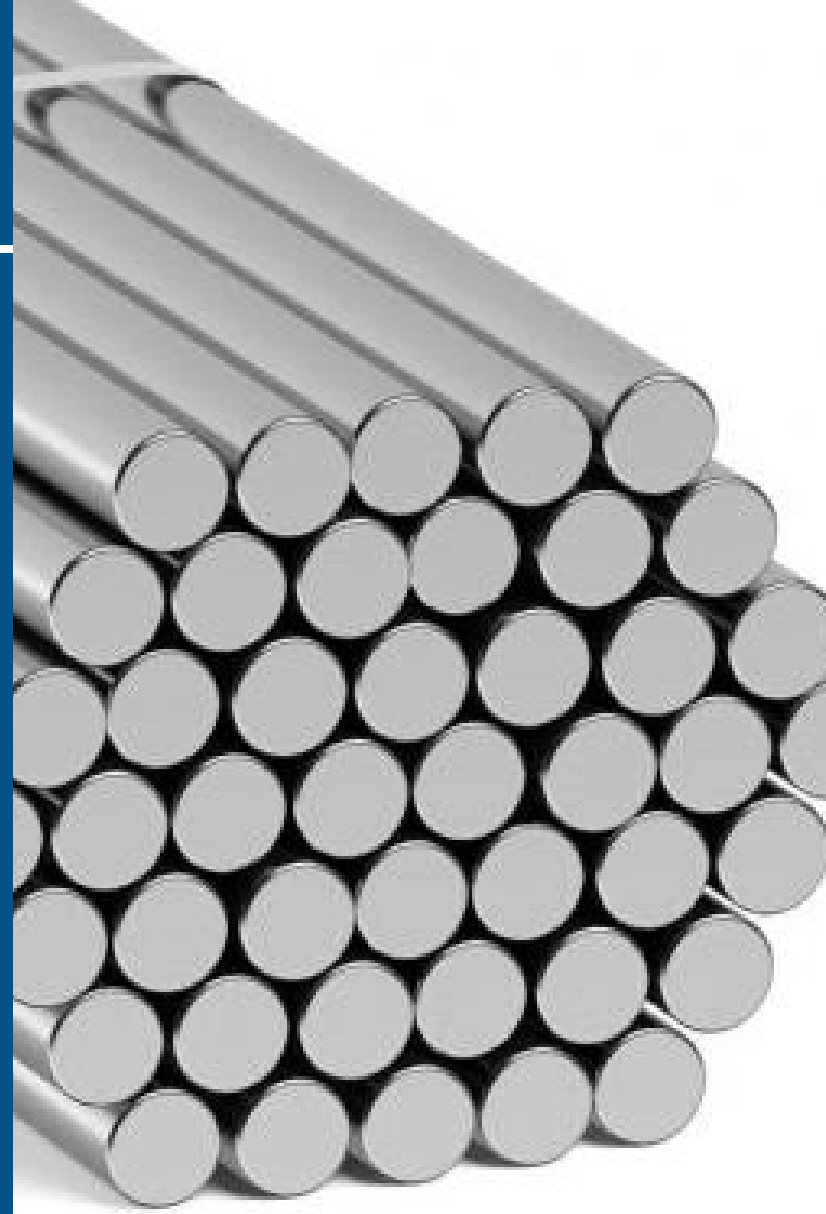


SHEETS & PLATES



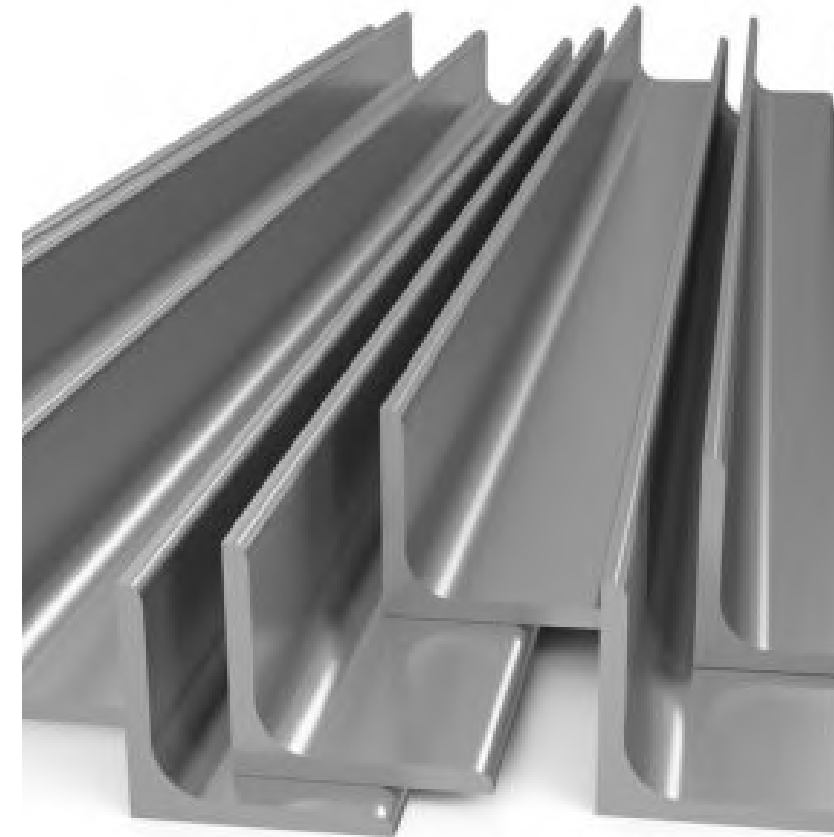
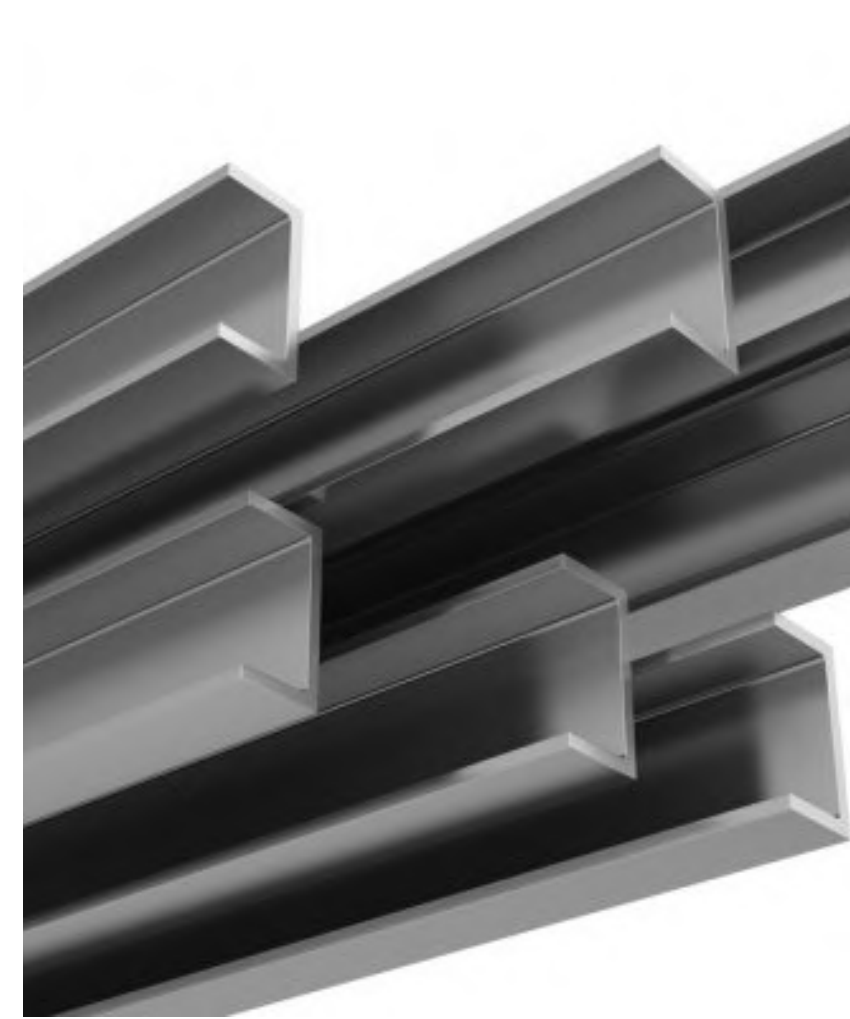
PRODUCTS

"OUR METAL FOR YOUR SOLUTION"



ROUND /
SQUARE /
RECTANGLE
/ HEX BARS

ANGLE



CHANNEL



PRODUCTS

"OUR METAL FOR YOUR SOLUTION"



WIRES



FLANGES



**FITTINGS
&
FASTENERS**



GRADES

STAINLESS STEEL

200 Series : 201, 202

300 Series : 301, 303, 304, 304l, 316 316l, 309, 310, 321, 347H

400 Series : 409, 441, 439, 446 , 410, 420, 430, 434

Other Grades : 904L, 17-4ph, 13-8MO, Nimonic- 90, Nitronic-50, Nitronic-60, A-286

DUPLEX AND SUPER STEEL

22101, 2205,2507, 2304, 32750, 32760,31200, 31260, 31803, 32001, 32950.



GRADES

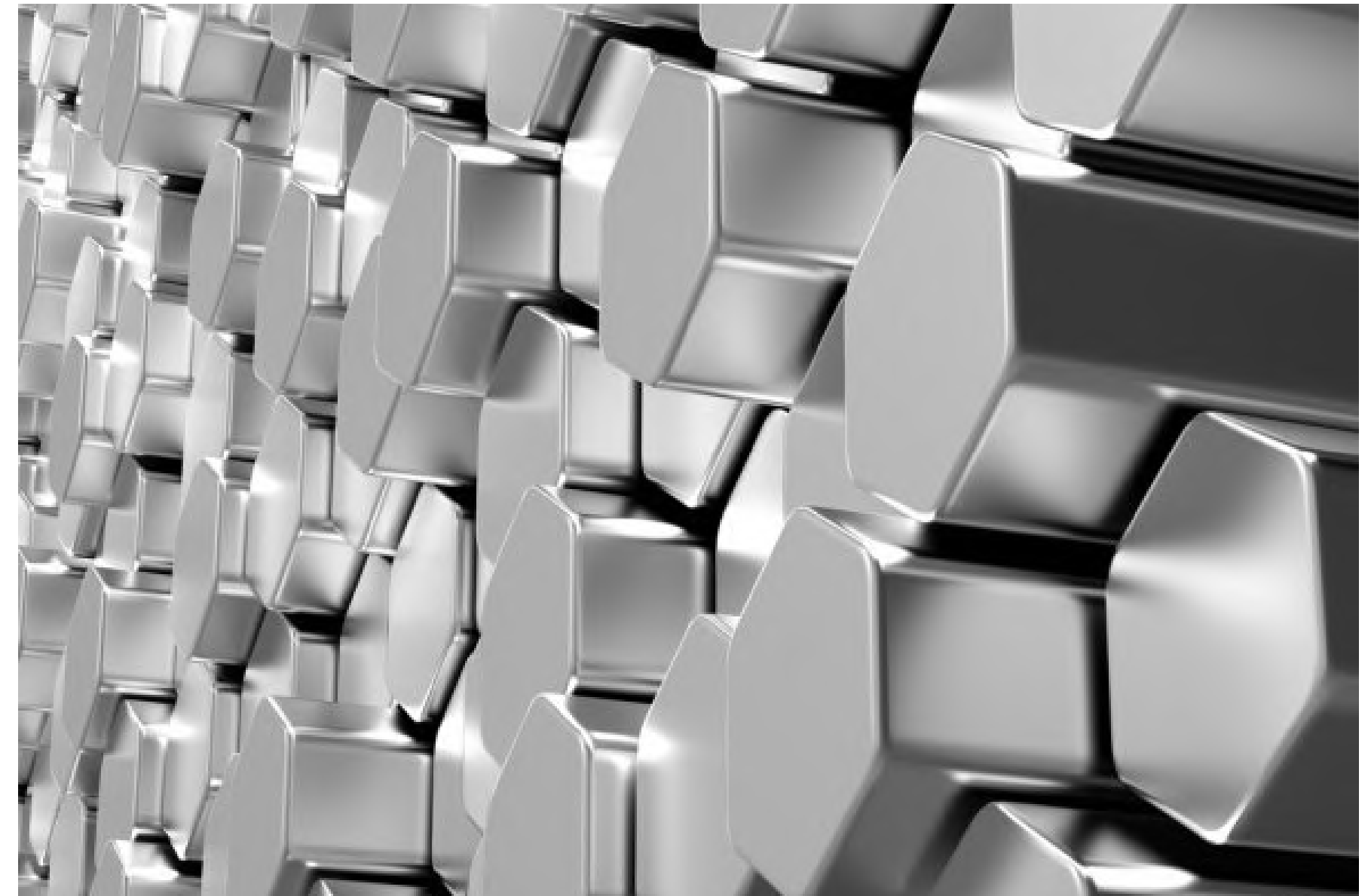
CARBON STEEL / ALLOY STEEL

ASTM A53 Gr B, ASME SA53 Gr B,
API-5L Gr B, ASTM A106 Gr B, ASME
SA106 Gr B, ASTM A106 Gr C, PSL 1 and
PSL2, Low temperature
EN-8, EN-9, EN-19, EN-24, EN-30, EN-31,
EN-36, EN-45, EN-47

Alloy Steel Grades : ASTM A210 A-1 / DIN
P-1, P-5, P-11, T-11, T-22,
Boiler Sa516 grade 70 , Alloy steel grade
5, 9 , 11, 12, 91

BIMETAL

Aluminum and Copper ,Stainless Steel and Copper



GRADES

ALUMINIUM

1100, 2011, 2014, 3003, 5052, 6061, 6082, 6063, 7075 ,
HE15, HE30

COPPER AND BRASS

Copper : Astm- B68, Astm B-75,
BS-2871, BS-1977, BS-24 Part 5 ,
Commercial, Electrolytic, Cupro Nickel 90/10, 70/ 30

Brass : Navel Brass 60/40, Brass 63/37
BS218, BS250A, BS251, BS252, BS369,
BS1001, BS1002, BS1949



GRADES

WEAR RESISTANT

Hardox : 400, 450, 600 / Dillidur 400, 500, 600

TITANIUM

Titanium Grade 1, Grade 2, Grade 3, Grade4, Grade 7,
Titanium Grade 5 (Ti-6al-4V), , Grade23

INCONEL

Inconel : Alloy 600, 625, 718, 800, 825,
X-750, 600, 690, 800H.904



GRADES

HASTELLOY

C-22, C-276, C-4, B-3, C-2000, G-30

NICKEL

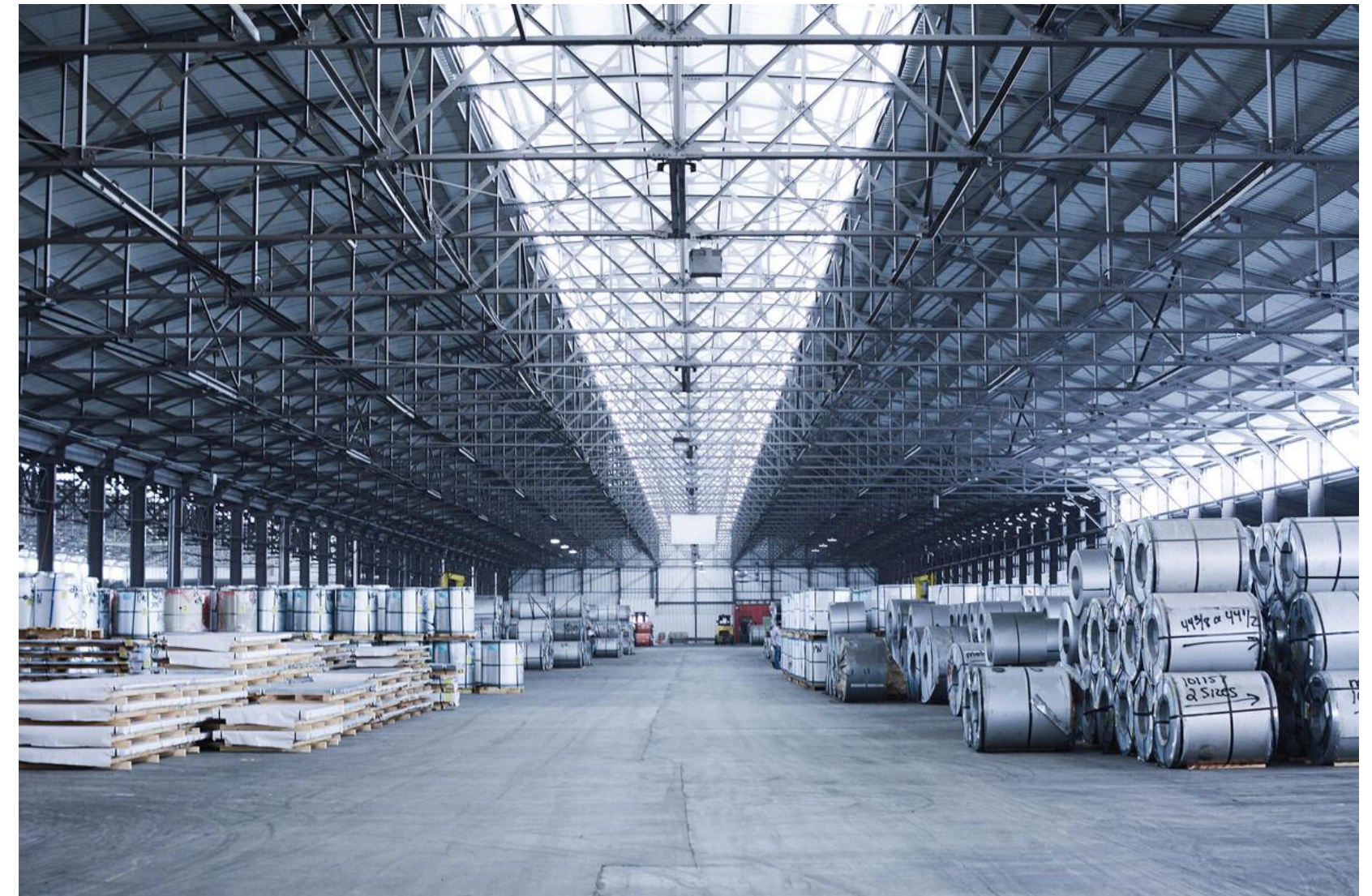
Nickel 200, 201.205, 212, 270

BERYLLIUM

C27600, C17200

ALUMINISED STEEL

SA1C / SA1D / SA1E / DX52D / DX56D



SERVICES

- **Slitting and Shearing**
- **Pipe Drawing**
- **Circle Cutting**
- **Customised Size
Manufacturing**
- **Product Guidance**



BRANDS IN WHICH WE DEAL



CONTACT INFORMATION

MAILING ADDRESS

132, KIKI Street, Gulalwadi, Mumbai-400004

EMAIL ADDRESS

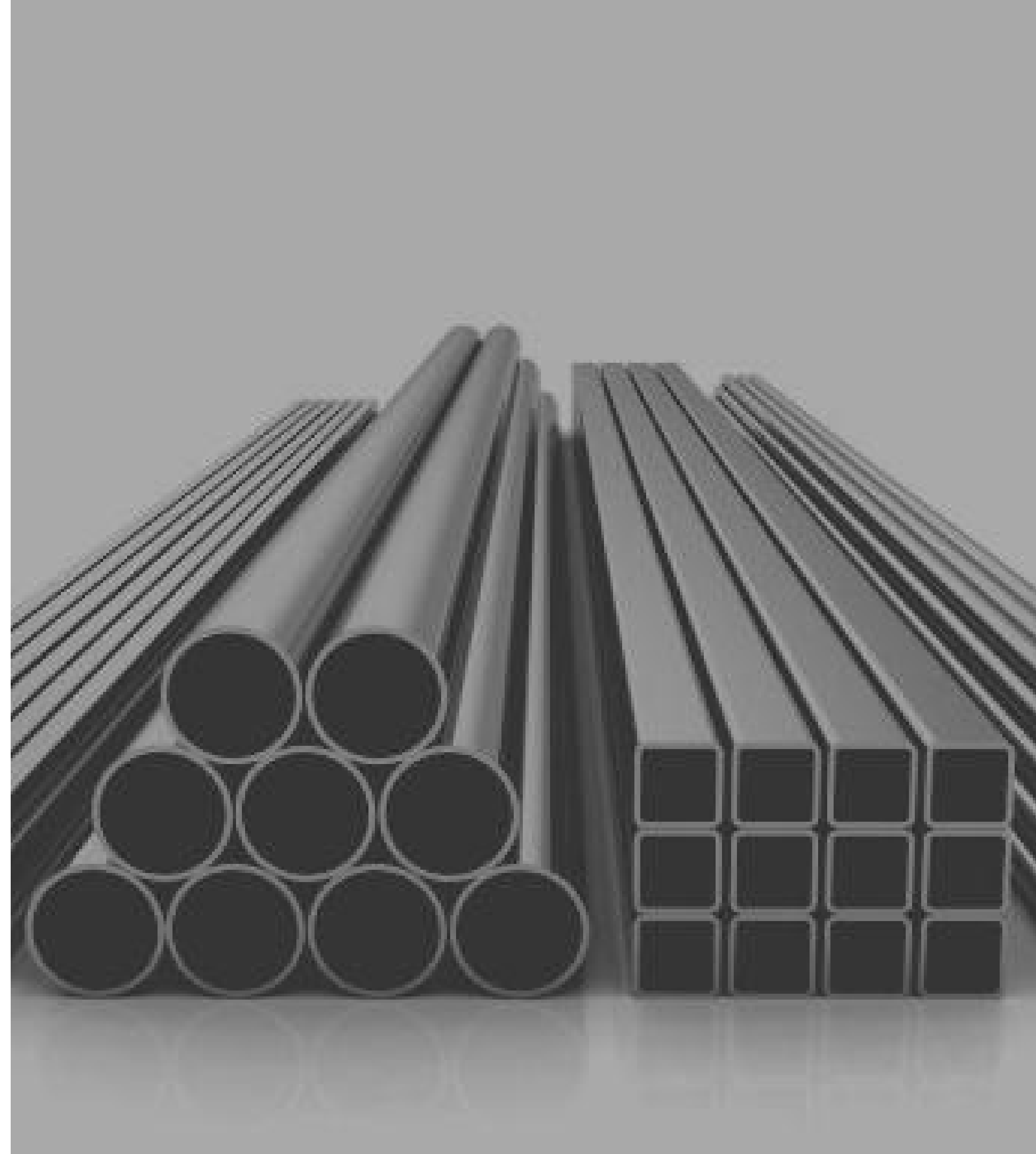
info@metalvision.in / sales@metalvision.in

PHONE NUMBER

+91-22-6610-9741

WEBSITE

www.metalvision.in





FACEBOOK

https://www.facebook.com/metalvision_-105246654306224



INSTAGRAM

https://www.instagram.com/metalvision_/



YOUTUBE

https://www.youtube.com/channel/UCwEJX_Y7a8AxRqpyhIM_7SQ



LINKEDIN

<https://www.linkedin.com/company/metal-vision/>

"OUR METAL FOR YOUR SOLUTION"

FOLLOW US